

Alpaca Couture


mit Baby Alpaka
with baby alpaca

mix&knit

NEU/NEW

Z9EZO86 :ON/IN
Nr./No.: 9807367

Schachenmayr
SINCE 1822

 25g ≈ 113m
0.88 oz ≈ 124yds



5 kg



250 g

(10 x 25 g)



- 48% Alpaka / alpaca / alpaga / Alpaca / Alpaca
- 36% Baumwolle / cotton / coton / katöen / Algodón / cotone / Bomull
- 15% Polyamid / polyamide / Poliamida / poliamida / poliamide
- 1% Elasthan / elastane / élasthane / Elastaan / Elastano / elastan / Elastan / elasthan

beige
00005



camel
00010



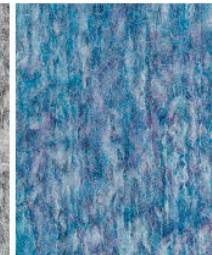
rosé
00035



hellgrau
00090



hellblau
00053



anthrazit
00098



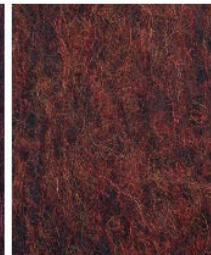
schwarz
00099



burgund
00032



herbst
00012



mustard
00020

